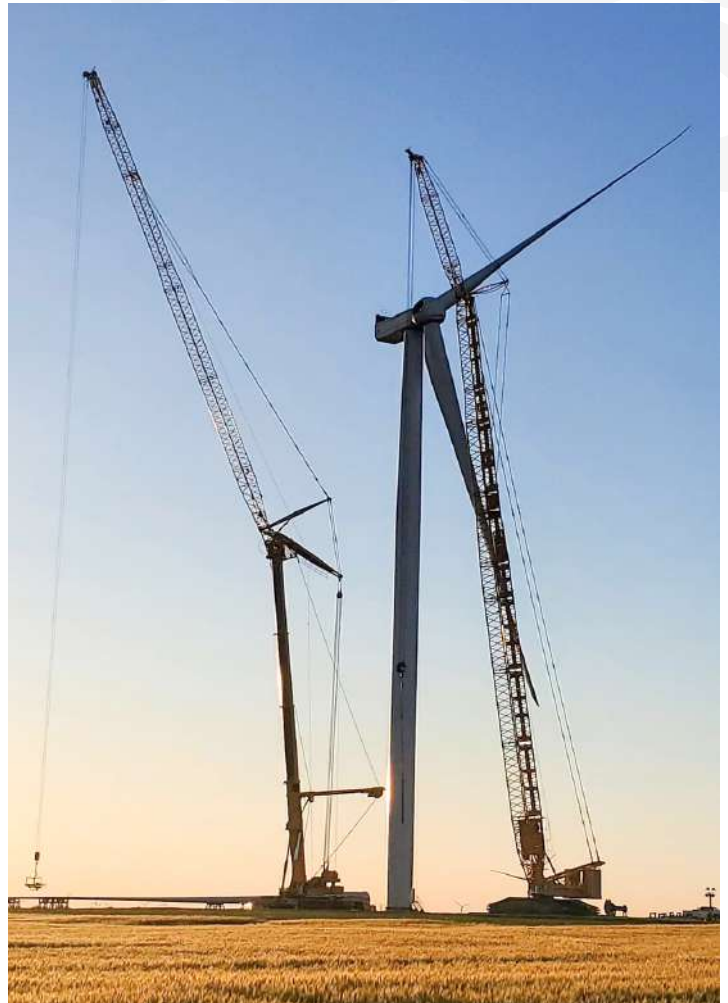




LR 1800 Move

Crane Service Inc - Newkirk, OK

Taylor Crane & Rigging dispatched 9 employees with 5 semis and 12 lines of kamag trailer to move Liebherr LR 1800 from tower 72 to tower 7 in Newkirk OK. TCR provided manpower to disassemble and reassemble the crane. A total of 48 loads of equipment were moved including parts for their Liebherr LTM 1500. The project took 2.5 days and was completed ahead of schedule, without any damage or injuries. Estimated total weight of equipment moved 750 tons.



COFFEYVILLE

1211 W. 12TH ST.
Coffeyville, KS 67337
Office: 620-251-1530



PROJECT URL

TULSA

1919 N. Garnett Rd
Tulsa, OK 74116
Office: 918-439-4000

